

# PRODUCTS

## What's New:

# BusinessObjects XI – Releases 1 and 2

**BusinessObjects XI Release 2**  
BusinessObjects XI Release 2 builds on the world's leading business intelligence platform, BusinessObjects XI, to deliver new ways to access the information you need to do your job, allowing you to be able to say "I can answer *my questions*. I can trust and share *my insight*. And I can do everything I need on *one BI standard*."

## My Questions. My Insight. One BI Standard.

BusinessObjects™ XI is the first and only business intelligence (BI) platform that delivers a complete set of market-leading BI capabilities: best-in-class performance management, reporting, query and analysis, and data integration. BusinessObjects XI introduces significant innovations that deliver BI in new ways to a much broader set of users as well as completing the integration of the Crystal and BusinessObjects product lines.

BusinessObjects XI Release 2 builds on the proven and trusted BusinessObjects XI platform. It provides substantial functional improvements and innovations across the BusinessObjects XI platform and includes full platform-level support for Desktop Intelligence™ (formerly BusinessObjects full client) to allow a smooth transition path to BusinessObjects XI for all existing customers who have invested in that technology.

BusinessObjects XI Release 2 takes innovation even further to allow non-traditional BI users to easily access critical business information via Intelligent Question™.

What's new in BusinessObjects XI depends on where you're coming from – Business Objects 5.x/6.x, Crystal v10 or both. For that reason, this document contains three sections:

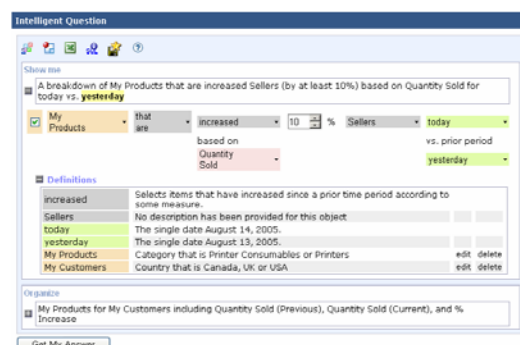
- New for all users
- New for users of BusinessObjects 5.x/6.x
- New for users of Crystal v10

## New for All Users

### BusinessObjects Intelligent Question

Intelligent Question is a major innovation within BusinessObjects XI Release 2. It allows non-traditional users of BI tools to easily ask structured questions of business information: Who were my top ten customers this year? What products did they buy?

Users can dynamically ask questions through a simple, question-based interface that allows them to save favorites, then move to a web-based query and analysis front end (Web Intelligence™) for further analysis or export to Excel.



*Empower more business users with the most intuitive BI interface ever.*





## BusinessObjects Desktop Intelligence

BusinessObjects XI Release 2 includes Desktop Intelligence – the new name for BusinessObjects full client. By using Desktop Intelligence, customers can protect their existing investment and benefit from the latest trusted and proven BusinessObjects XI platform.

Desktop Intelligence is available in all of the current BusinessObjects full-client deployment options including:

- Full “offline” mode (no connection to a network server)
- Client/server mode
- Three-tier mode
- Workgroup mode

Note that when deployed in three-tier mode, the ability for end users to automatically download and install Desktop Intelligence is not supported in BusinessObjects XI Release 2.

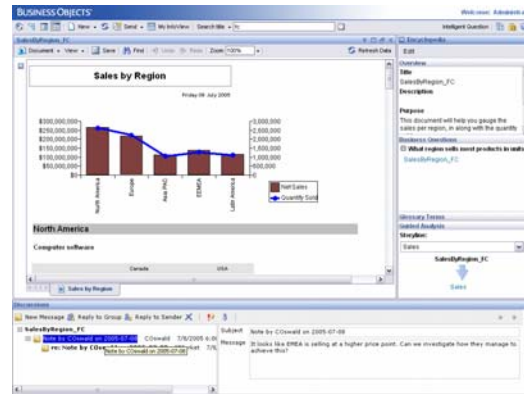
Desktop Intelligence has been enhanced to allow query and display of Unicode data. This provides organizations with the ability to further reduce the cost of ownership of delivery BI to multi-lingual audiences.

## BusinessObjects Enterprise

With BusinessObjects XI, the service-oriented platform allows Crystal Reports®, Web Intelligence, Desktop Intelligence, OLAP Intelligence™, Dashboard Manager, and Performance Manager to plug directly into the framework. Customers who have invested in these products can leverage their current product investments, while gaining access to the broadest set of BI tools on the market.

New features include:

- Support for Crystal Reports, Web Intelligence, Desktop Intelligence, OLAP Intelligence, Dashboard Manager, and Performance Manager; plus Auditing, Publishing, Live Office, and Crystal Reports Explorer
- Single repository, security, system management, publishing, portal, and portal integration environment
- Integrated scheduling based on user input, events, and calendars
- Full cross-platform support for all leading platforms, web servers, application servers to fit virtually any customer scenario
- Auditing of all system interactions
- Support for Encyclopedia, Process Tracker, and Discussions – all new parts of the platform



Desktop Intelligence documents benefit from full portal support such as Encyclopedia and Discussions.



## Publishing

BusinessObjects XI Enterprise Release 2 provides the capability to personalize and deliver content to a list of subscribers. A publication maintains a list of subscribers, in the form of principals, as well as profile targets, and each recipient's profile values. When you schedule a publication, each recipient receives a personalized copy of the associated report, based on the publication's profile targets and the recipients' profile

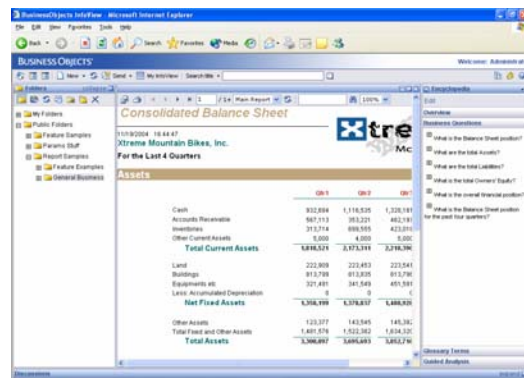
values. Users can subscribe to or unsubscribe to a publication, provided that they have the necessary credentials.

### Process Tracker

Process Tracker is part of BusinessObjects Enterprise, designed to align business intelligence with an organization's business processes. It allows an organization to visually map, track, and communicate standardized business processes through a set of activities and their associated business content for more consistent and proactive decision making. Process Tracker helps users visually outline the steps required to consistently follow a business process, such as Sarbanes-Oxley review or a vendor performance analysis. With each step in a business process, users can link associated BI content for easy access to the key information they need to make informed decisions. Accountability can be assigned to responsible owners for each milestone in a business process. Plus project stakeholders can add comments to each stage for timely collaboration.

### Encyclopedia

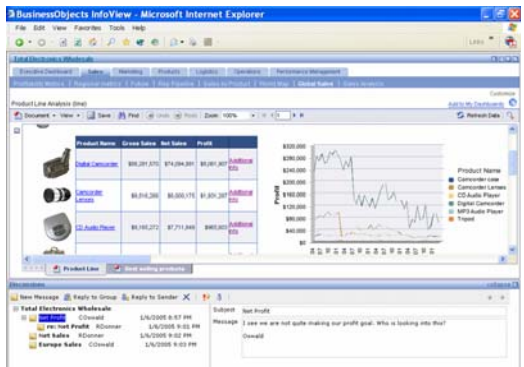
Encyclopedia is a key new innovation in BusinessObjects XI for creating reference guides for BI content. It provides end users with a faster way to locate and interpret their corporate information for confident, accurate decision making. With Encyclopedia, end users can deliver handy BI reference guides right from their BI portal for instant access to the underlying context. Visual maps show relationships between BI documents making it easy to locate relevant information. Plus a search panel enables end users to locate specific BI content using everyday business terms. An overview panel explains the purpose of a document, what business questions it helps answer, and how it is best used. In addition, a glossary of synonyms and definitions explains the key terms used for consistent interpretation.



Encyclopedia brings business context to information. Here, a list of business questions is provided to help the user understand how to use the document.

### Discussions

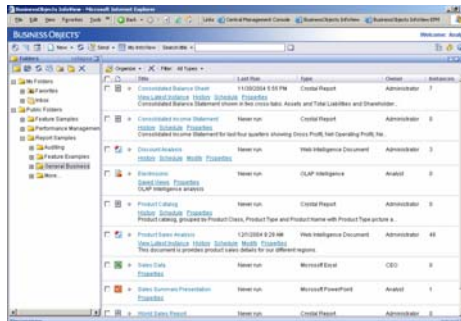
Discussions provide threaded notes on a specific report, document, or dashboard. Users can create and maintain comments on documents and to share that valuable insight across the organization, providing a greater understanding of the context of existing documents.



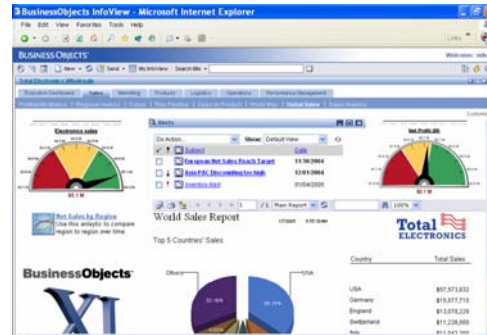
Threaded discussions provide greater business insight.

### InfoView

BusinessObjects Enterprise XI includes an all-new BI portal called InfoView. With its single web interface, InfoView can access and interact with any type of BI content including reports, analytics, dashboards, scorecards, and strategy maps. InfoView provides a consistent user interface for both Java and .Net platforms. InfoView replaces both the previous BusinessObjects InfoView and the Crystal Enterprise™ ePortfolio product.



Easy document navigation inside the InfoView portal via folders.

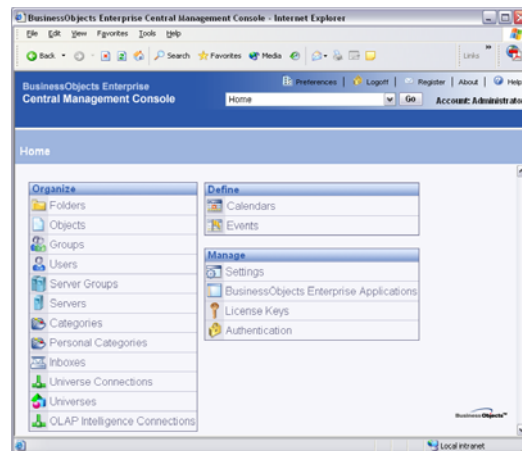


Access your dashboard from inside InfoView.

## Central Management Console (CMC)

Included with BusinessObjects Enterprise, the CMC is a fully .Net or Java web-based environment for managing, deploying, and configuring the entire infrastructure. The CMC is a tool for BI administrators to easily access and configure the system and overall user experience. The CMC manages the following system elements:

- User and group creation and management
- Authentication
- Services/server configuration
- Server groups (clusters)
- Object rights, processing, scheduling, security
- Business calendars
- License keys
- Categories
- Universes and data connections
- User interface settings and preferences



Manage, administer, and configure your BI deployment via the web-based CMC.



## Lifecycle Management

In BusinessObjects XI Release 2, we have introduced tools to automate the movement between development, test, and production environments. These tools support the movement of all report types and dependencies (folders, categories, security, universes, etc.) between the different parts of the deployment lifecycle, helping to reduced system management and implementation costs.



## Auditing

BusinessObjects XI Release 2 also introduces enhanced system auditing. Improvements include a new system auditing universe to allow custom analysis, and twenty-eight new audit reports covering the following areas: user activity, session data, and system usage.

## Data Integrator

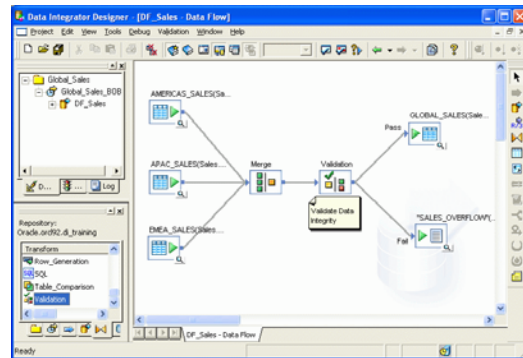
Data Integrator XI is an integrated part of the BusinessObjects XI platform, and includes multiple enhancements.

The key enhancements for Data Integrator XI are in three areas:

- Trusted information
- Maximum productivity
- Extreme ETL scalability

New features include:

- Data validation to ensure that only correct data is being loaded into the data warehouse
- Data auditing to allow developers to monitor and manage data quality and the entire ETL process
- Tools to simplify multi-user development and improve change management updates
- Impact analysis for Crystal Reports



Ensure data warehouse accuracy and integrity with Data Integrator XI validation and auditing.



Data Integrator XI Release 2 has been enhanced to deliver tight integration with the BI platform and provide enterprise-class extraction, transformation, and load (ETL) capabilities.

Key development themes are:

- Deeper integration with BusinessObjects Enterprise
- New and enhanced metadata management and data profiling
- Innovative ways to drive developer productivity

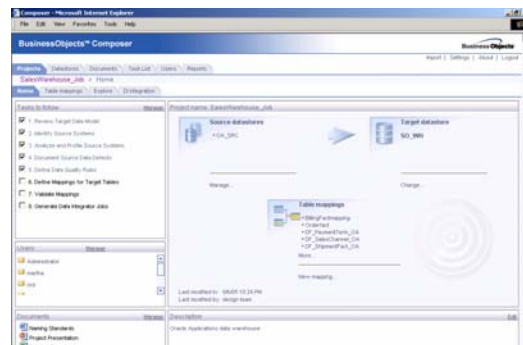
Integration between Data Integrator and BusinessObjects Enterprise helps accelerate BI implementations, reduce risks, and lower total cost of ownership. Some of the integration features include: the ability to view ETL metadata in the BI design environments and end-user reports.

Data Integrator XI Release 2 introduces new and innovative ways to manage metadata across the BI platform. Enhanced metadata reports for impact analysis make change management even easier for an end-to-end implementation. And the ability to include more attributes and support multi-object relationships when performing data profiling within the design environment helps ensure customers are always working with the right data.



## BusinessObjects Composer

BusinessObjects Composer is the only product in the market that helps organizations efficiently design bulletproof data integration processes. Through an intuitive web-based UI, developers and IT professionals can easily manage the design phase of a BI deployment. Collaborate with a team to gather business requirements, profile source data, build mappings, validate the accuracy of your design, generate data integration jobs, and document



Accelerate data integration design and improve data quality with BusinessObjects Composer.

their project.



## BusinessObjects Metadata Manager

BusinessObjects Metadata Manager actively collects and unifies BI, ETL, and third-party metadata. Organizations can easily view and analyze metadata through prebuilt metadata reports. These reports provide information on data quality, end-to-end impact analysis, and report-to-source data lineage. Consequently, organizations can deliver trusted data for compliance requirements, internal controls, and critical decisions. Metadata Manager allows IT to easily manage change and drive data consistency throughout the enterprise.

## Update and Migration

Business Objects recognizes the need to minimize the cost and risk for customers adopting the BusinessObjects XI platform. Business Objects provides a range of tools, documentation, best practice training and tailored services via our consultants or certified partners to make this transition as smooth as possible.



The automated Import Wizard available with BusinessObjects XI has been enhanced in BusinessObjects XI Release 2. It enables the easy update of all supported customers to the BusinessObjects XI platform by automating the movement of repositories deployed in previous versions to the BusinessObjects XI platform. This import includes the following components:

- Documents
- Universes
- Users and security profiles
- Groups and categories

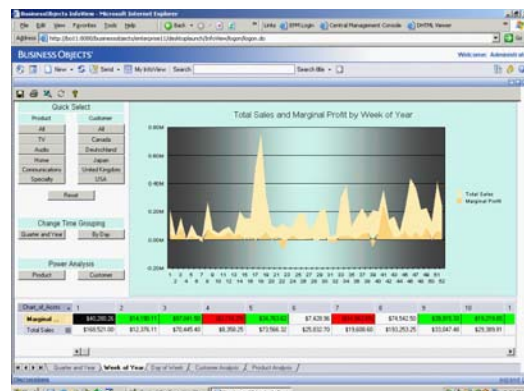
While this process is designed to help automate migration tasks, Business Objects recommends that trained staff or consultants from our professional services organization or certified partners be involved in any upgrades to a newer platform.

The Import Wizard in BusinessObjects XI Release 2 supports upgrades from:

- BusinessObjects 5.1.4 and above
- BusinessObjects 6.0, 6.1, and 6.5
- Crystal Enterprise 8.5, 9, and 10
- Application Foundation 6.1.b, 6.1.3, 6.5.1
- BusinessObjects XI

## BusinessObjects OLAP Intelligence

OLAP Intelligence is the new query and analysis client designed specifically to access OLAP servers. Based on the Crystal Analysis product, it also incorporates many of the ad hoc OLAP capabilities familiar to business users and analysts who have used the Web Intelligence OLAP 6.5 interface. OLAP Intelligence delivers powerful ad hoc analysis and easy-to-design and deploy managed analysis for today's leading multidimensional database servers.



Web-based interaction with OLAP Intelligence workbooks.

New features include:

- New user interface, web report authoring, and ad hoc access

- Improved web-based performance
- Expanded OLAP server support – includes SAP Business Warehouse, Essbase, IBM DB2 OLAP Server, and Microsoft Analysis Services



OLAP Intelligence XI Release 2 adds extension to the Essbase support to include features like:

- Attributes dimensions
- Alias tables
- User defined attributes
- Dynamic time series



## Performance Management: Planning, Budgeting, Forecasting, and Consolidations

Now within our performance management products BusinessObjects XI Release 2 introduces new applications for planning, budgeting, forecasting, and consolidations. Built by financial professionals for financial professionals, the Business Objects planning products offer unprecedented flexibility to support virtually any type of forward-looking planning needs for the organization. Key features include:

- User-friendly Excel-based templates
- Financial, staff, and capital planning needs
- Real-time consolidations across any hierarchy
- Online commenting
- Process control and workflow management
- Strong “what if” scenario and business rule modeling
- Multiple end-user access methods: web, windows client, offline
- Prebuilt best practice solutions for many industries



*Powerful planning capabilities are now available within Excel and on the web.*

Because our planning products are tightly integrated with Dashboard Manager and Performance Manager, you can quickly view your plan information via easy-to-use dashboards and reports, and launch a planning session directly from the BusinessObjects XI platform.

## New for Users of BusinessObjects 5.x/6.x

### BusinessObjects Enterprise

BusinessObjects Enterprise is our single BI platform based extensively on the proven Crystal Enterprise v10 architecture. It is based on modern web standards with an industry-based communication framework that ties all the components and services together. It has been recognized as a highly scalable, reliable, and powerful platform in tens of thousands of customer deployments in production since its inception.

## Scheduling

Scheduling in BusinessObjects XI is flexible, scalable, and fault tolerant. Incorporated into the Central Management Server (CMS), scheduling requires little to no additional configuration beyond setting up access to email servers, printers, and file servers to get started.

There are many options available for scheduling including scheduling based on a specified time, a recurring schedule, or even a predefined business calendar. Depending on the objects type and the abilities of the processing servers, the scheduler can schedule to different formats including Excel, PSF, Word, and text and to different destinations including email, printer, or file server.



## The Semantic Layer

BusinessObjects XI Release 2 brings a number of improvements to the Business Objects universes, with the objective of meeting the requirements of the specialized end-user client tools.

The ability to build universes upon OLAP data sources helps organizations leverage their data stored in OLAP servers and easily standardize on BusinessObjects XI for all of their BI requirements. OLAP-based universes are available with BusinessObjects XI for SAP BW. With BusinessObjects XI Release 2, it has been extended to Essbase and Microsoft Analysis Services. Note also that Web Intelligence can access Oracle OLAP via SQL by using the Oracle metadata bridge with BusinessObjects XI.

The metadata bridge functionality that has been available in previous versions of the Universal Metadata Bridge has been integrated into the Universe Designer in BusinessObjects XI Release 2. Additionally it supports the Common Warehousing Metamodel (CWM) version 1.1. This functionality is also extended to include the lineage and impact analysis of Data Integrator.

Other universe design enhancements in BusinessObjects XI Release 2 include:

- Support for Unicode, which gives you the ability to work with tables in different languages in the same universe
- The ability for prompted reports to take advantage of the index awareness functionality available in most databases
- The ability to create cascading prompts within the Universe Designer interface
- Enhancement of the SQL created using the semantic layer to include server side data ranking and the ability to delegate query splits to the database
- Improved universe security management with more intuitive workflows and the ability to combine rows restrictions with AND or OR operators

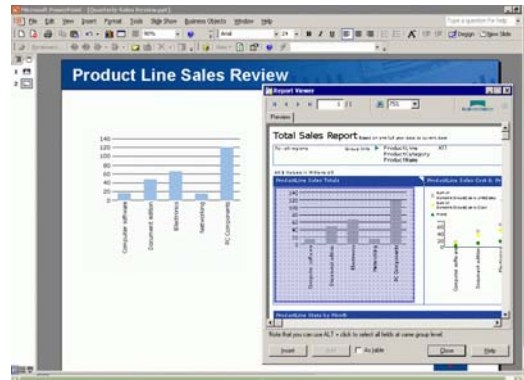
## Business Views

Business Views are designed to simplify the report creation, modification, and interaction experience by abstracting the complexity of data for Crystal Reports developers. Business Views help separate the data connections, data access, business elements, and the overall business definition and allow for granular access control for report designers.

## BusinessObjects Live Office

Live Office helps business users easily embed accurate, updatable data in Word documents, Excel spreadsheets, and PowerPoint presentations. These resulting Office documents can then be securely shared with others using the BusinessObjects Enterprise platform and hosted in corporate portals for collaborative performance management.

Users can now manage their Office documents the same way they manage their other BI content while taking advantage of the BusinessObjects Enterprise advanced security and BI deployment power.



Embed secure, refreshable charts right inside PowerPoint.

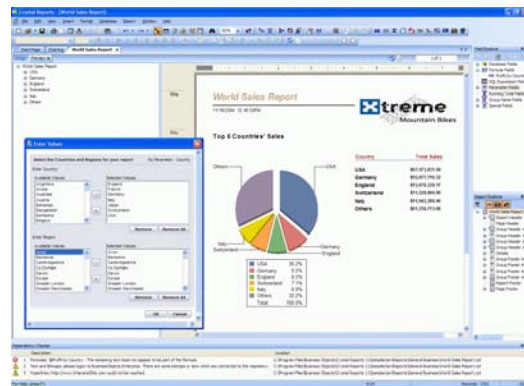
Live Office XI Release 2 deepens integration with the Office system. It allows business users to leverage the dynamic cascading prompts from a Crystal report to filter the embedded data. It is also possible to bind these prompts to specific cells in a Microsoft Excel spreadsheet so they can be re-filtered using simple drop-down menus. Within Excel, Live Office also allows for drill down on embedded charts from a Crystal report in order to view the next level of detail.

Live Office XI currently supports Crystal Reports, Web Intelligence, and OLAP Intelligence.

## Crystal Reports

Crystal Reports is the world standard for enterprise reporting; it is a reporting solution that helps rapidly create flexible, feature-rich, high-fidelity reports and tightly integrate them into web and windows applications.

Crystal Reports is also embedded within enterprise application software provided by leading vendors including Microsoft, SAP, PeopleSoft, Siebel, Borland, BEA, and IBM. Over 500 leading independent software vendors have standardized on Crystal Reports as their trusted partner for enterprise reporting.



Crystal Reports – the standard in enterprise reporting.



## BusinessObjects Web Intelligence

In addition to all of the functionality from Web Intelligence 6.5, Web Intelligence XI includes:

- An all-DHTML environment optimized for consumption, rather than authoring, letting users “walk before they run,” by exposing minimal functionality to new users, but letting them, or administrators progressively turn on more functionalities as they get more comfortable with the interface
- The ability to see the technical metadata behind any report – who authored the report, when it was last refreshed and how long it took, and how the report formulas are defined
- New scheduling from the new BusinessObjects XI platform, that allows end users to schedule a report on a regular basis or using a custom “business calendar” that can be tailored to an organization’s fiscal calendar, holiday schedule, or other unique organizational requirements
- The new BusinessObjects XI platform allows users to hold discussion threads around individual Web Intelligence documents



On-report analysis and the new context panel with information on the report metadata.



Web Intelligence XI Release 2 has been enhanced to deliver query authoring power and ease-of-use interactivity features so that organizations can broaden the reach of ad hoc analysis through a zero-client interface. Enhancements include:

- Synchronized multiple data providers that allow users to bring together data from two universes into a single table or chart and then explore this information
- Combined queries using the ‘Union,’ ‘Intersect,’ and ‘Minus’ operators
- Access to OLAP data via universes
- Sub queries – allowing users to use the results of a query as a filter for a further query
- Conditional queries based on object-to-object comparison
- Manual editing of the SQL

Additionally, Web Intelligence XI Release 2 provides greatly enhanced report creation capabilities such as:

- Ranking of both query results and report content
- Custom sorting
- Advanced formula language functions

Finally, Web Intelligence XI Release 2 provides the ability to view the ETL metadata from BusinessObjects Data Integrator. This allows users to view the data lineage information such as the source tables where the report data came from and any expression executed to create the final data. This information adds to the existing metadata displayed in the Web Intelligence report to ensure users have the highest confidence in the data that is presented to them.

## Performance Management Products

BusinessObjects XI delivers performance management functionality on an integrated platform. In addition to all of the functionality from BusinessObjects 6.5, new features in performance management include:

- Simpler way to create and share dashboard with other users
- Ability to display Crystal Reports, report parts, and OLAP Intelligence content in dashboards
- Centrally managed security via the Central Management Console
- “Change management” – an easy two-step migration from development to test to production servers



BusinessObjects XI Release 2 brings increased integration and enhanced ease-of-use across the performance management products. The analytics displayed in dashboards and scorecards have been enhanced to offer a better display of data and visual effects. This adds more interactivity and flexibility in display and formatting options.

Additionally, a goal value import tool is available to enable users to populate the goal values such as the target or tolerance limit, using universe-based queries. Users can reuse goal values already being stored in other applications such as Microsoft Excel, or any database that a universe can access.

BusinessObjects XI Release 2 also delivers integration for the performance management products with the most popular enterprise information portals (EIPs), via the same industry standard portlets as the BI platform.

The existing analytic solutions also benefit from the integrated platform, and can be extended and customized using all content from the platform including Crystal Reports.



*Performance is easier to understand at a glance with new visualization techniques in BusinessObjects XI Release 2.*

## New for Users of Crystal v10

### Crystal Reports

Crystal Reports XI includes new report authoring enhancements and application development capabilities. New features include:

- Dynamic cascading prompts (parameter driven)
- Tighter integration with Business Views and universe metadata
- Fully updated “look and feel,” including a new XP-like interface

Crystal Reports XI Release 2 brings new enhancements in two main areas:

- Easier navigation with advanced search in the HTML preview tab throughout all pages of a report including any visible sub reports
- Increased productivity with features like improved drag-and-drop capabilities onto and within a report



## BusinessObjects Enterprise

### Universes

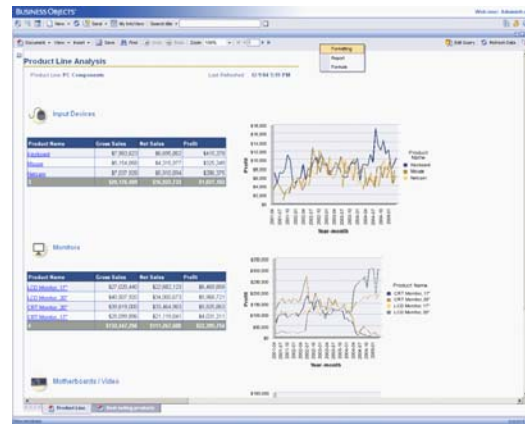
The patented Business Objects semantic layer is the foundation for empowering end-user query and analysis. It abstracts the complexity of data by using business language rather than data language to access, manipulate, and organize data. The business language is stored in objects in a Business Objects universe. Both Web Intelligence and Crystal Reports can access universes using the Business Objects universe query panel, which allows users to drag and drop fields, measures, and dimensions straight onto the report.

All universe objects and connections are stored and secured in the CMC, requiring a user to log in to BusinessObjects Enterprise to use Universe Designer.

### BusinessObjects Web Intelligence

Web Intelligence is a web-based query and analysis tool designed to provide insight to the maximum number of users via an easy-to-use environment and highly-scalable platform.

It provides business users with a powerful WYSIWIG report creation environment, flexible drill down techniques, and simple ability to customize (without programming). Casual users and report consumers benefit from an easy-to-use interface that provides step-by-step query creation, on-report analysis, and effortless save to Microsoft Excel and Adobe Acrobat PDF formats with a zero-footprint product.



*Query and analysis for business users with Web Intelligence.*

### BusinessObjects Dashboard Manager

Dashboard Manager provides organizations with visibility into their critical business activities through an easy-to-use and build dashboard interface. It offers:

- Drag-and-drop dashboard creation
- Metrics engines to track and monitor critical business measures
- Flexible templates to provide extreme insight into the business

### BusinessObjects Performance Manager

Performance Manager helps organizations focus on key performance metrics and transform information into a strategic asset by providing goal management, scorecards, strategy maps, and recommended actions. Organizations can align their day-to-day decisions with high-level initiatives through scorecards that show how a user's goals align with those initiatives.

### Analytic Engines

The powerful analytic engines are designed to enhance your dashboards and scorecards to provide more insight. They further deepen the analysis capabilities of the rest of our performance management products. The engines are:

- Set Analysis
- Predictive Analysis
- Process Analysis

The analytic engines are available as add-ons to Dashboard Manager and Performance Manager, with some of the capabilities being incorporated into the performance management applications.

### **Performance Management Applications**

Performance management applications represent the next generation of BI. They consist of domain-focused business metrics, prebuilt dashboards and scorecards, and best-practice analysis techniques for gaining business insights. Applications can also provide managers with a framework for business analysis. In addition, entire organizations can benefit from the management of disparate data sources using a data warehouse, as well as unprecedented flexibility to implement and customize prepackaged analytics. BusinessObjects XI includes analytic solutions from the set of performance management applications.



## **Services Available for BusinessObjects XI Release 2**

### **Education Services**

In addition to updating our training offerings around specific products (e.g., BusinessObjects Knowledge Accelerator – Web Intelligence and our classroom training), we have created a number of training offerings specifically to help you move up to the BusinessObjects XI Release 2 platform. These include the following:

- Understanding the BusinessObjects XI Release 2 Platform
- Essentials of Migrating to BusinessObjects XI Release 2
- Migrating from BusinessObjects 5x/6x to BusinessObjects XI Release 2

Furthermore, we have a number of detailed courses to help administrators and designers make the most of the BusinessObjects XI Release 2 platform.

### **Consulting Services**

For customers moving to BusinessObjects XI Release 2, we have two specific offerings to aid migration to and make the most of the new platform. First we have our Migration Assessment Workshop, where we work with key stakeholders in your organization to map out the project plan and impact of moving to BusinessObjects XI. Following the Migration Workshop, our Migration Services carry out the full technical migration as well as the technical education required for the administrators within your organization.

For more information contact your account manager or contact us via our website [www.businessobjects.com](http://www.businessobjects.com).

[www.businessobjects.com](http://www.businessobjects.com)

Copyright © 2005 Business Objects. All rights reserved. Part # WS024-A